

APV

Pressore filettato a sfera e molla

Threaded ball spring plunger

Presor roscado a esfera y resorte



Descrizione

Corpo filettato con testa taglio a cacciavite.

Threaded body with screwdriver slotted head.

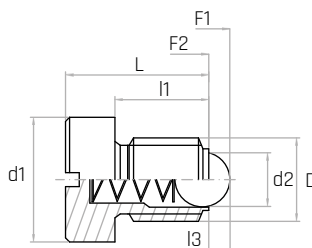
Cuerpo roscado con cabeza con corte destornillador.

Materiale

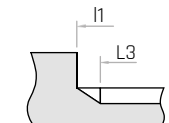
Corpo filettato in acciaio brunito. Sfera e molla in acciaio inox AISI 303.

Threaded burnished steel body. Stainless steel ball and spring (AISI 303).

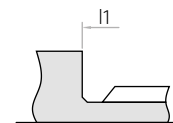
Cuerpo roscado de acero pavonado. Esfera y resorte de acero inoxidable (AISI 303).



Fine filetto: M4 e M5
Final section of thread: M4 and M5
Parte final de la rosca: M4 y M5



Fine filetto: da M6 fino a M12
Final section of thread: from M6 to M12
Parte final de la rosca: de M6 a M12



Codice	Modello	D	d2 mm	d1 mm	L mm	l1 mm	L3 mm	l3 mm	F1 N	F2 N	Peso gr.
7747560	APV/9	M4	2,5	6	9	6,5	5,0	0,8	6	12	2
7747565	APV/12	M5	3,0	8	12	8,5	6,5	0,9	9	14	3
7747570	APV/14	M6	3,5	10	14	9,0	-	1,0	11	16	4
7747575	APV/16	M8	5,0	13	16	11,0	-	1,5	18	30	9
7747580	APV/20	M10	6,0	16	20	14,0	-	2,0	24	45	17
7747585	APV/22	M12	8,0	18	22	15,0	-	2,5	35	60	28

NOTE: A richiesta, disponibile la versione con molla rinforzata (R). F1: Pressione molla precarico. F2: Pressione molla carico max.

Available also with heavy end-force spring (R) upon request. F1: Spring pressure preload. F2: Spring pressure max load.

Disponibile también en la versión con resorte reforzado (R). F1: Presión de resorte precarga. F2: Presión de resorte carga máxima.